

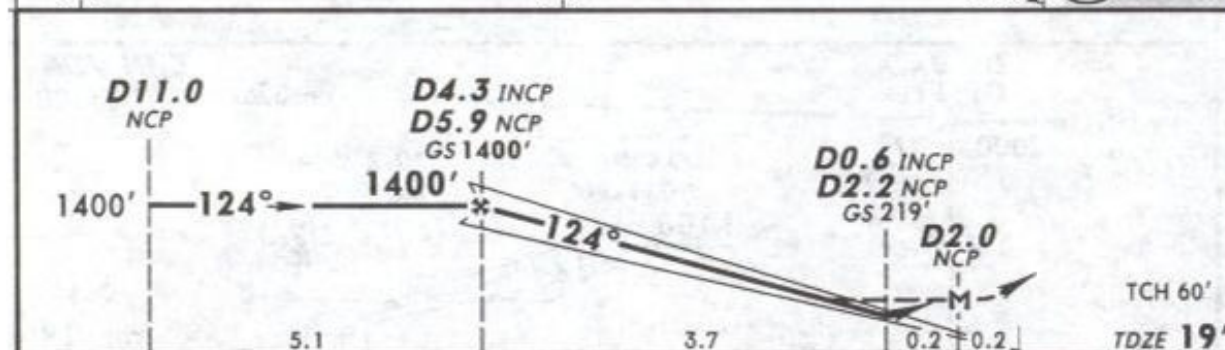
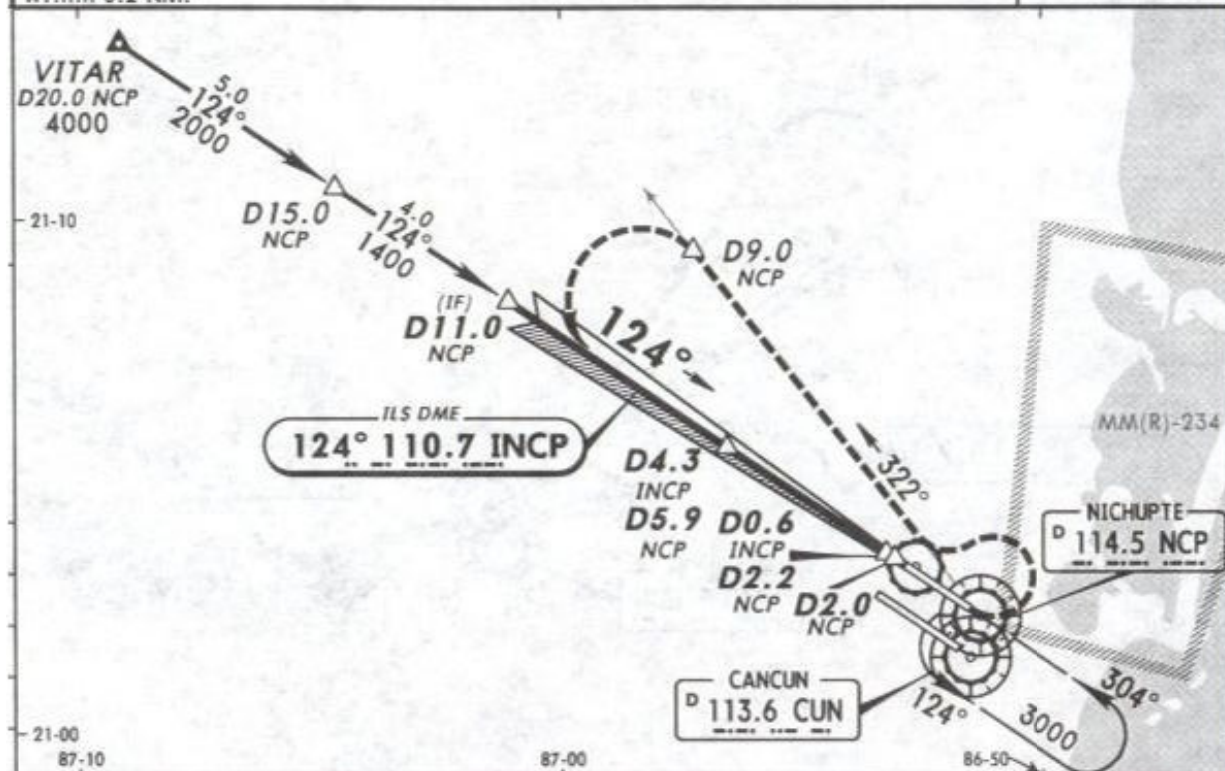
MMUN/CUN  
CANCUN INTL

13 NOV 09

(11-1)

CANCUN, MEXICO  
ILS DME or LOC 1 Rwy 12L

*ATIS 127.7	*CANCUN Approach (R) 121.1	CANCUN Arrival 123.2	CANCUN Tower 118.6	*Ground 121.7
LOC INCP 110.7	Final Apch Crs 124°	GS D4.3 INCP D5.9 NCP 1400' (1381')	ILS DA(H) (CONDITIONAL) 219' (200')	Apv Elev 20' TDZE 19'
<p>MISSED APCH: LEFT turn to intercept NCP VOR R-322 outbound to D9.0 NCP, then turn LEFT to intercept NCP VOR R-304 inbound to NCP VOR at the minimum holding altitude.</p> <p>Alt Set: MB (IN on req) TDZ Elev: 1 MB Trans level: FL 195 Trans alt: 18500'</p> <p>1. DME/ILS usable with DME equipped aircraft with accurate instrument reading within 0.2 NM.</p>				
				<p>2000'</p> <p>MSA CUN VOR</p>



Gnd speed-Kts	70	90	100	120	140	160	ALSF		NCP	
GS	3.00°	377	484	538	646	753	861	REIL PAPI	LT	114.5 to D9.0 R-322 NCP
MAP at D2.0 NCP										
STRAIGHT-IN LANDING RWY 12L							CIRCLE-TO-LAND			
ILS			LOC (GS out)				Not Authorized Southwest of Rwy 12L/30R			
DA(H) 219'(200')			MDA(H) 420'(401')							
FULL		ALS out				ALS out		Max Kts	MDA(H)	
A	1/2		3/4		3/4		1		90	480'(460')-1
120										
140										
165										
D					1		1 1/4		580'(560')-2	
ALL Non Skd	DA(H) 271'(252')				1 1/4		1 1/2			
	3/4	1								